



AFUA

The name Afua was inspired by Sophie's husband's (fashion designer Charlie Casely-Hayford) Ghanaian family heritage and legacy. The pattern references typical Kente cloth motifs and structure, reimagined in a different scale, palette and pattern. The Afua fabric is available in Turmeric (bold and characterful patterns in gold and navy sit on a dusty white background), Walnut (where amber stars are striped in teal over an oatmeal backdrop, complete with white and black block patterns), Taupe (a balanced neutral woven with cream), and Olive (where dusty blue block work stands prominently against olive green stripes).

sister

AFUA

YC04153

55% Viscose 30% Linen 15% Polyester Trade

140cm / 55" wide

20,000 Martindale rubs

Repeat: 37cm wide x 16.5cm high

Inherently passes: Cig only & CAL 117

Awaiting results to confirm if can be treated to pass Crib 5



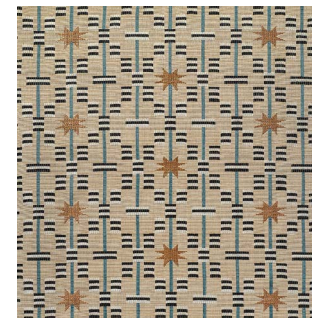
Available in 4 colours



Taupe 01



Olive 02



Walnut 03



Turmeric 04