



DISA

The Disa fabric was inspired by the hardy beauty of the orchids found growing on Table Mountain in South Africa. A unique textural fabric design crafted from natural viscose, and intricately woven in jacquard looms with high density yarns. After it is translated into weave, each fabric roll can take up to one day to produce; in order to achieve the desired effect. A versatile fabric that lends itself to accent chairs, small upholstery items like benches and stools, weighty curtains or the perfect statement cushion. The Disa fabric is available in Verdigris (an olive-green base with earthy tones contrasted by cherry red petals and cobalt patchwork) and Lapis (a fading lapis base with orange and fern coloured Disa petals blend for a lush and understated finish).

sister

DISA

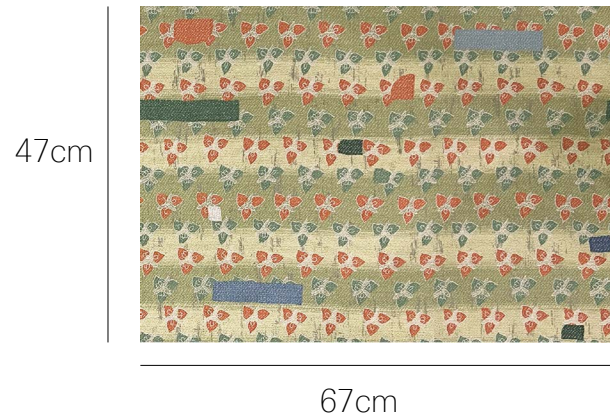
YC04106

75% Viscose 25% Polyester

138cm / 54" wide
12,000 Martindale rubs

Repeat: Width 67cm x Height 47cm

Inherently passes: Cig only
Awaiting results to confirm if can be treated to pass Crib 5 & CAL 117



Available in 2 colours

