



MARCI MOHAIR

A Sister favourite, mohair offers the optimal mix of refinement and durability. Perfect for upholstery of everyday seating, the Marci Mohair gives colours a reimagined richness without compromising on texture. Additional to Yarn Collective's current collection, the Mohair fabric is available in Pampas (a grey with mottled green, named after the grass-covered plains beneath the Andes), Hibiscus (a pale dusty, pink offering eye-catching elegance), Protea (a deep and moody shade of pink for a classic and sophisticated finish), Lichen (a vibrant, luscious green derived from the mossy textures found in woodlands), and Festuca (embodying a spiky personality and complex colouring, creating softer hues that suit modern and traditional spaces alike).

sister

MARCI MOHAIR

YC03537

61% Mohair & 39% Cotton

140cm / 55" wide

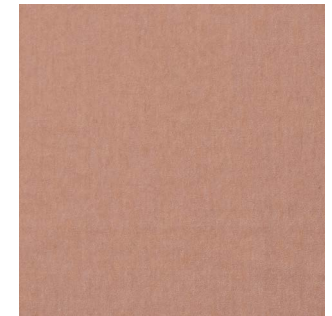
Weight 1190g

100,000 Martindale rubs

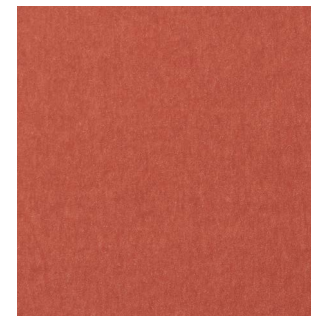
Inherently passes: Crib 5 & CAL 117
CAL 117



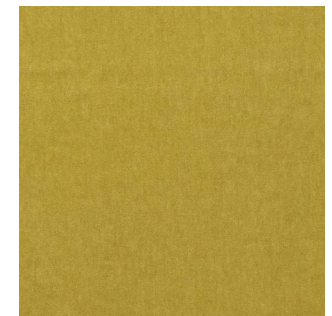
Pampas 17



Hibiscus 18



Protea 15



Lichen 14



Festuca 16